
INTERMOT - ADVANCED - MOTORS

IAM SERIES

H6 MODEL

***IAM 2200-2500-2800
3000-3200-3500 H6***

***IAM 2200-2500-2800
3000-3200-3500/C H6***

***IAM 2200/B125
2500/B150
3000/B200***

INDEX

TECHNICAL DATA - - - - -	Pag.	88
IAM H6 2200-2500-2800-3000-3200-3500 - - - - -	"	89
IAM H6 2200-2500-2800-3000-3200-3500/C - - - - -	"	90
IAM H6 2200/B125 2500/B150 3000/B200 - - - - -	"	91
ORDERING INSTRUCTIONS - - - - -	"	92
GRAPHIC PERFORMANCES H6 2200-2500-2800-3000 - - - - -	"	93
GRAPHIC PERFORMANCES H6 3200-3500 - - - - -	"	94

TECHNICAL DATA

H6

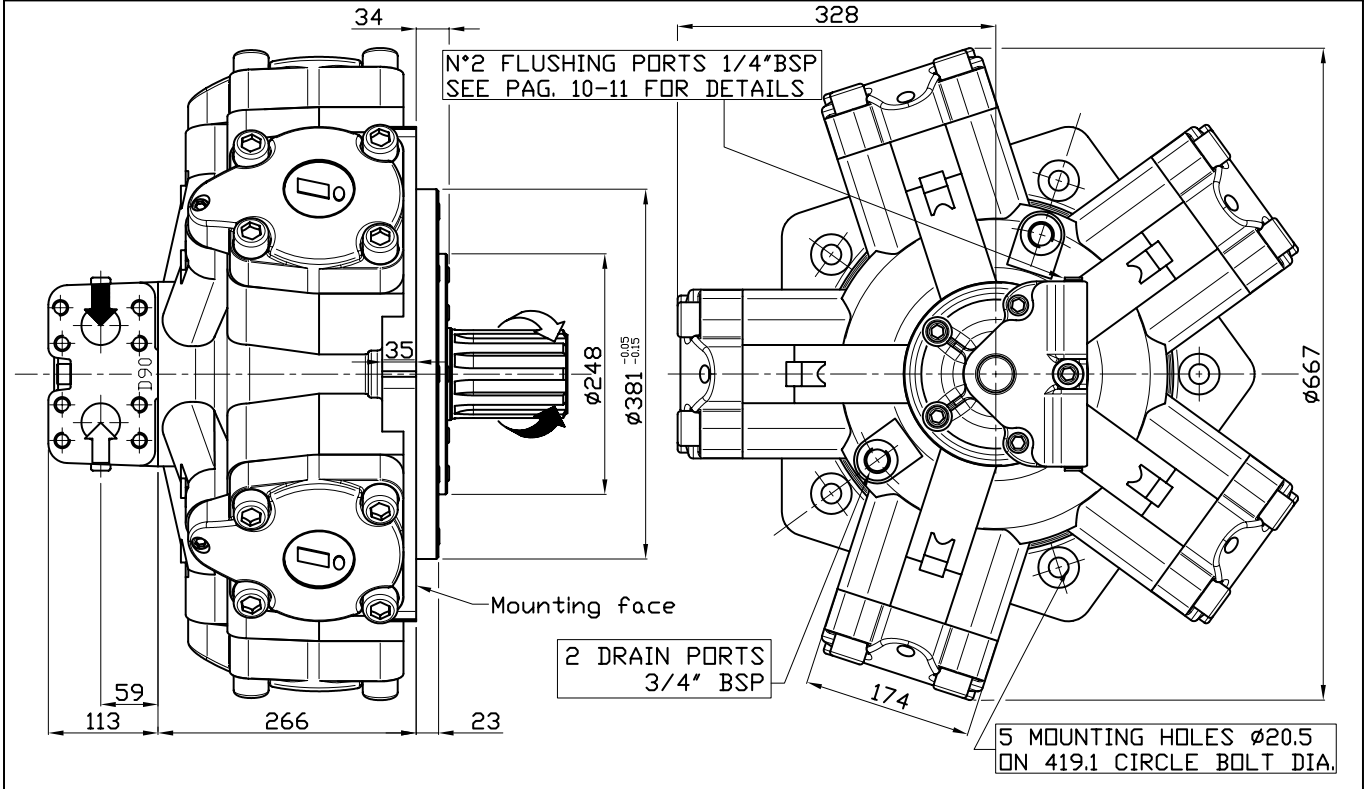
	MODEL	IAM 2200 H6	IAM 2500 H6	IAM 2800 H6	IAM 3000 H6	IAM 3200 H6	IAM 3500 H6
Displacement	cc/rev	2206	2525	2807	2983	3289	3479
Specific Torque	Nm/bar	35.1	40.2	44.7	47.5	52.3	55.4
Max cont. Pressure	bar	250	250	250	250	250	250
Max int. Pressure	bar	300	300	300	300	300	300
Peak pressure	bar	350	350	350	350	350	350
Max continuous speed	rpm	220	220	220	210	200	200
Peak speed	rpm	260	260	260	250	240	240
Max continuous power	HP	163	163	163	163	163	163
	kW	120	120	120	120	120	120
Max power	HP	228	228	228	228	228	228
	kW	170	170	170	170	170	170

- N° of pistons: 5
- Max case pressure: 6 bar
- Max back pressure: 70 bar
- Dry weight: 308 kg
- Temperature range: -30°C ÷ +70°C
- Minimum speed: 0.5 rpm
- Flushing flow: 15 l/min

(*)for further details regarding flushing go to page 10 of this catalogue.

SIZE

IAM 2200-2500-2800-3000-3200-3500 H6



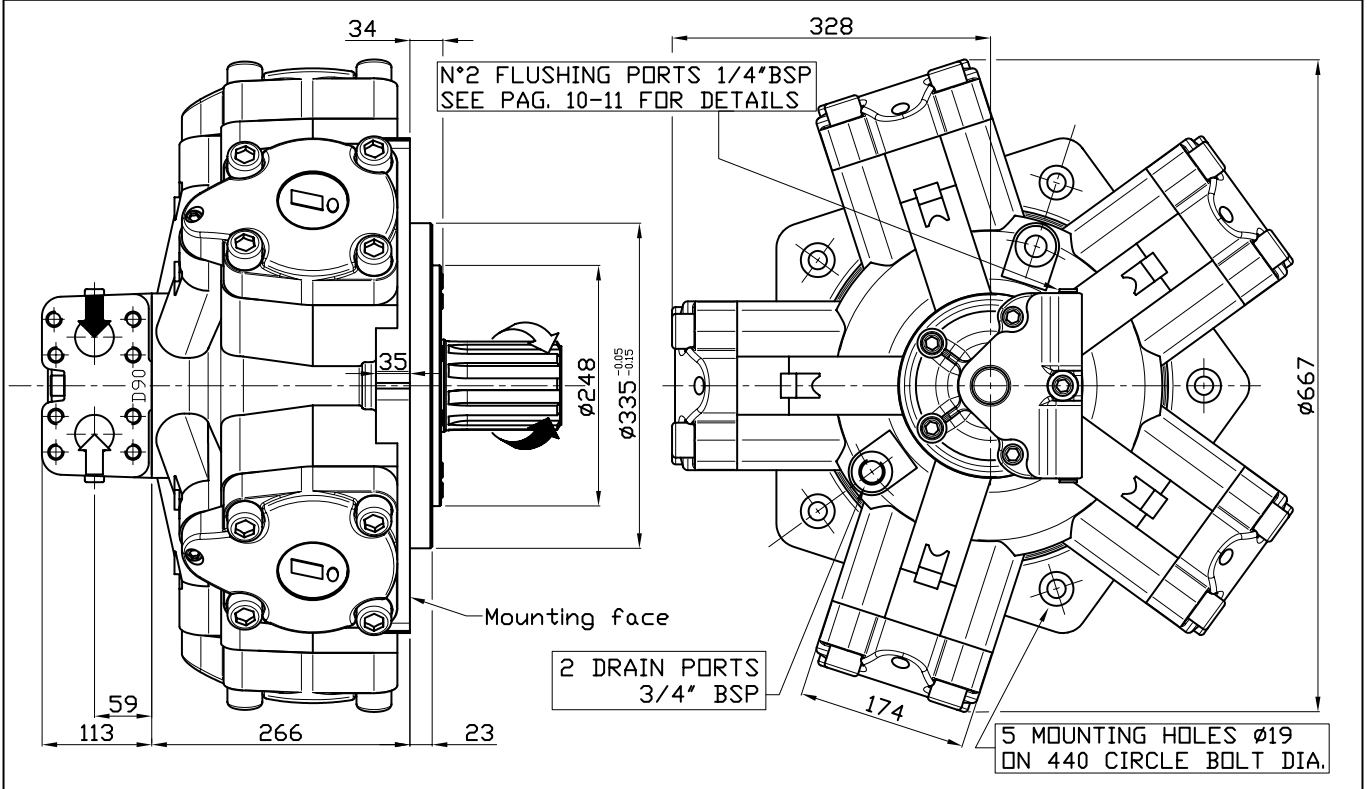
SHAFT

IAM 2200-2500-2800-3000-3200-3500 H6

A0: Standard splined shaft	A1: Splined shaft on request
<p>Technical drawing of standard splined shaft A0. Dimensions include a total length of 156, a splined length of 120, and a distance of 97 from the mounting face to the start of the splines. The shaft has an M20x35 thread and 92x82x12 UNI221 Z=10 splines.</p>	<p>Technical drawing of splined shaft A1. Dimensions include a total length of 133, a splined length of 97, and a distance of 76 from the mounting face to the start of the splines. The shaft has a 3/4"-16 UNF-2B thread and BS-3550 1963 ASA.B.5.15 1960 PITCH 6/12 Z=20 splines.</p>
A2: Parallel shaft on request	
<p>Technical drawing of parallel shaft A2. Dimensions include a diameter of 89.4, a total length of 131, a splined length of 120, and a distance of 24 from the mounting face to the end of the splines. The shaft has a 3/4"-16 UNF-2B thread and a diameter of $\phi 85 \pm 0.01$.</p>	

SIZE

IAM 2200/C-2500/C-2800/C-3000/C-3200/C-3500/C H6



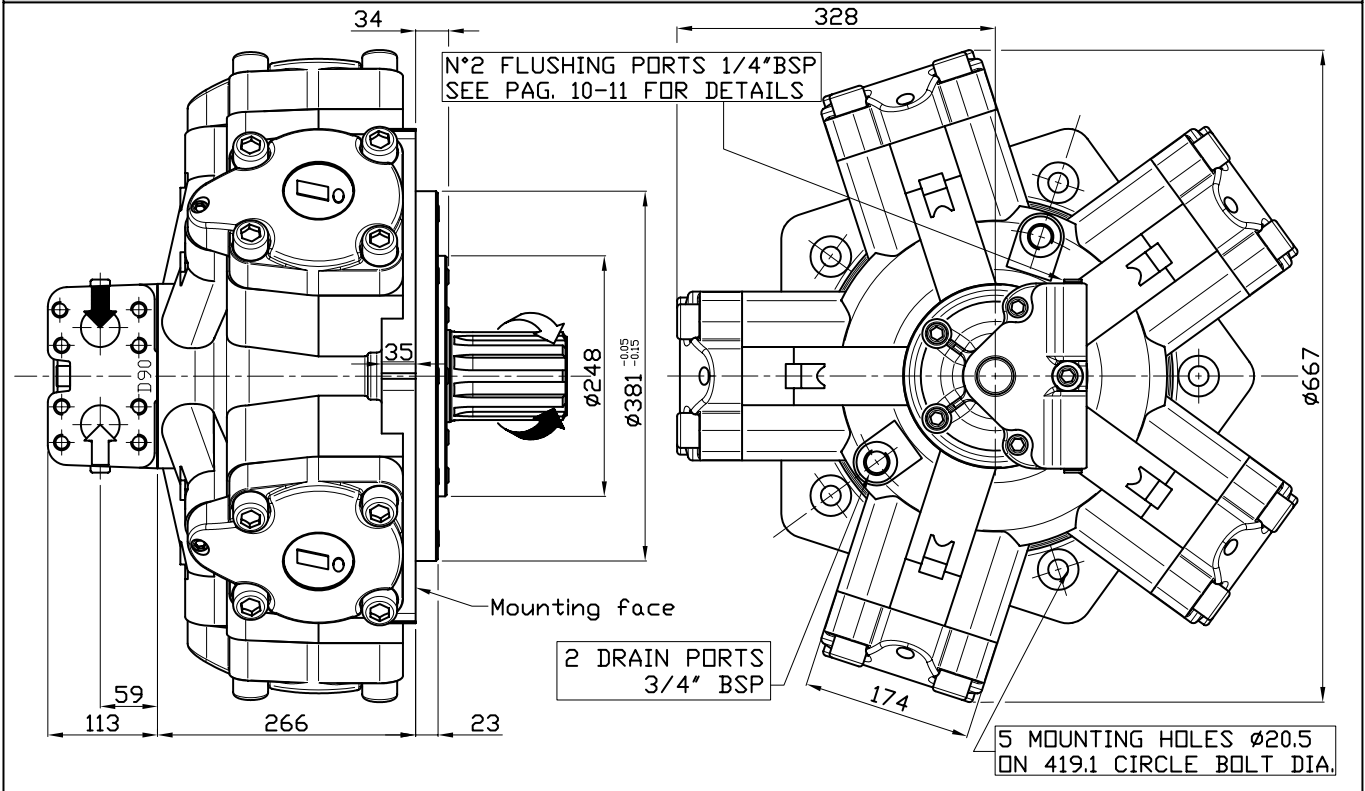
SHAFT

IAM 2200/C-2500/C-2800/C-3000/C-3200/C-3500/C H6

A0: Standard splined shaft	A1: Splined shaft on request
<p>Technical drawing of standard splined shaft A0. Dimensions: 156 total length, 120 splined length, 97 distance to mounting face, M20x35 thread, and 92x82x12 UNI221 Z=10 splines.</p>	<p>Technical drawing of splined shaft A1. Dimensions: 133 total length, 97 splined length, 76 distance to mounting face, 3/4"-16 UNF-2B thread, and BS 3550, 1963 ASA B.5.15 1960 PITCH 6/12 Z=20 splines.</p>
A2: Parallel shaft on request	A3: Female shaft on request
<p>Technical drawing of parallel shaft A2. Dimensions: 153 total length, 120 shaft length, 110 distance to mounting face, 25 thread length, M20x35 thread, and $\varnothing 90 \pm 0.01$ diameter.</p>	<p>Technical drawing of female shaft A3. Dimensions: 14 thread length, 10 distance to mounting face, 48 shaft length, 60 distance to mounting face, N85x3x27-9H DIN 5480 thread, and $\varnothing 105$ diameter.</p>

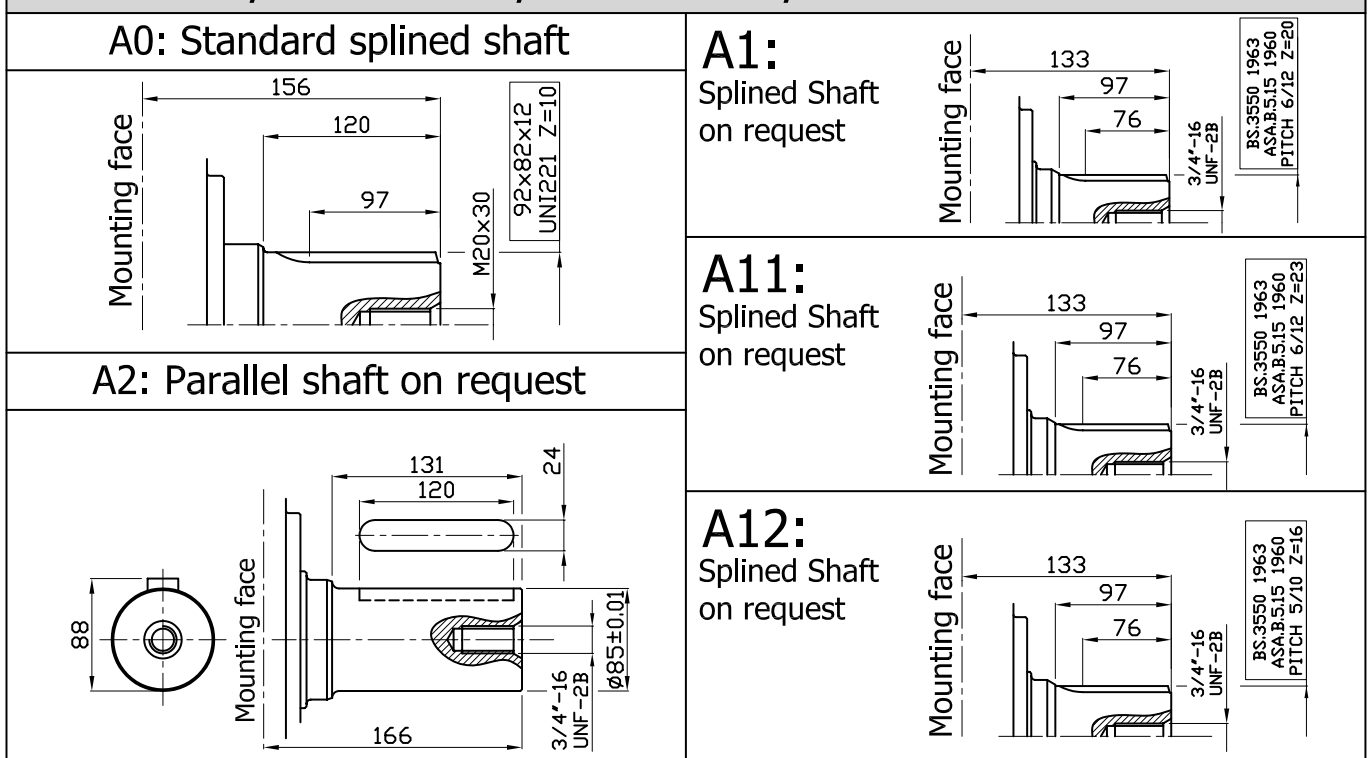
SIZE

IAM 2200/B125-2500/B150-3000/B200 H6

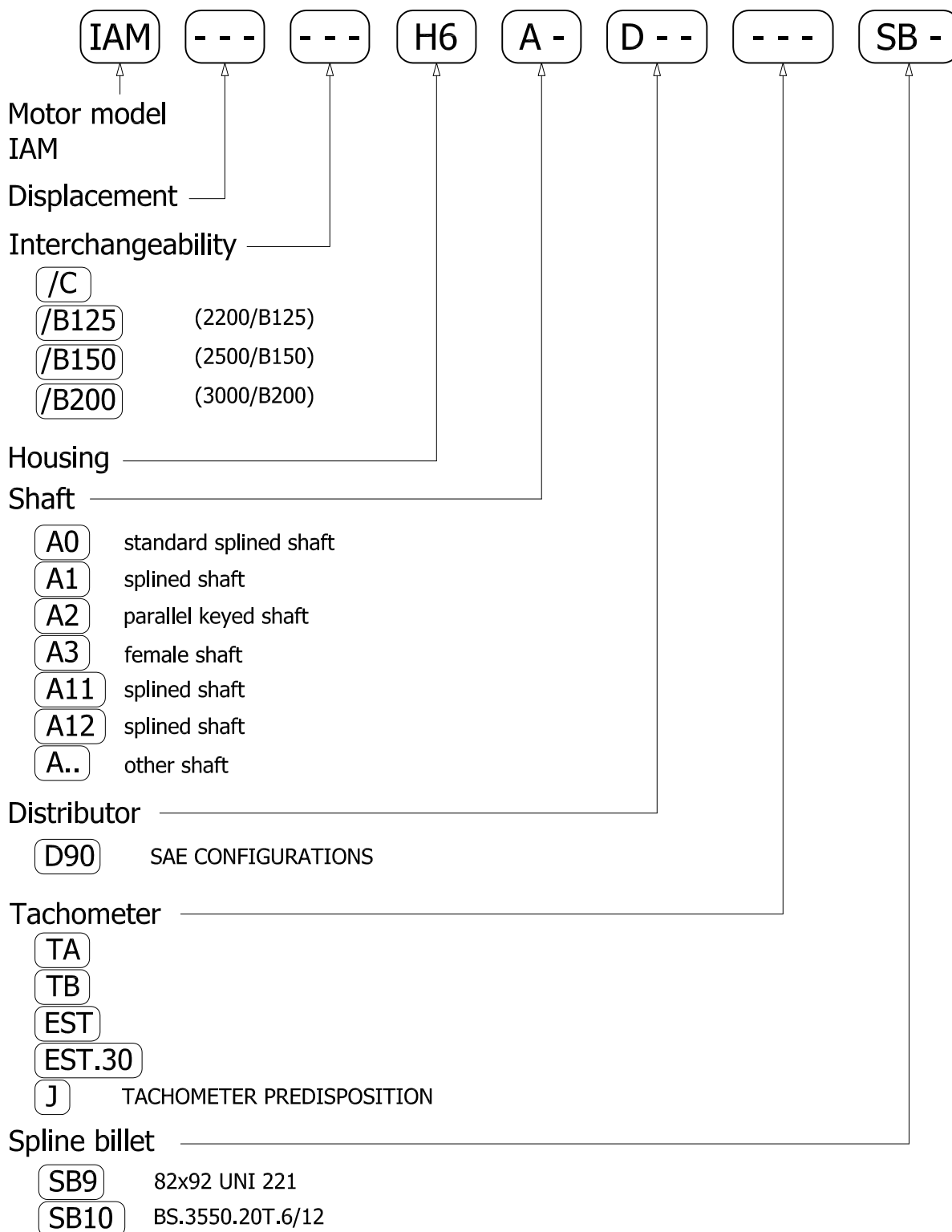


SHAFT

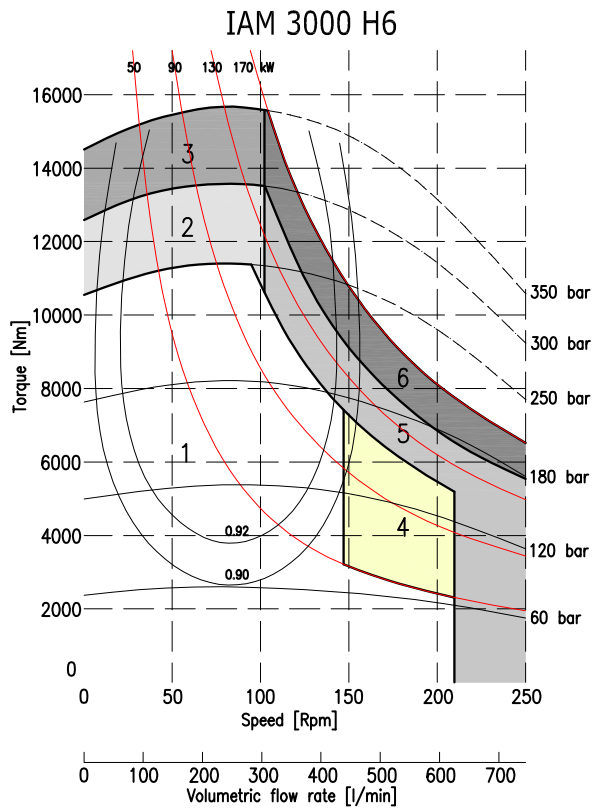
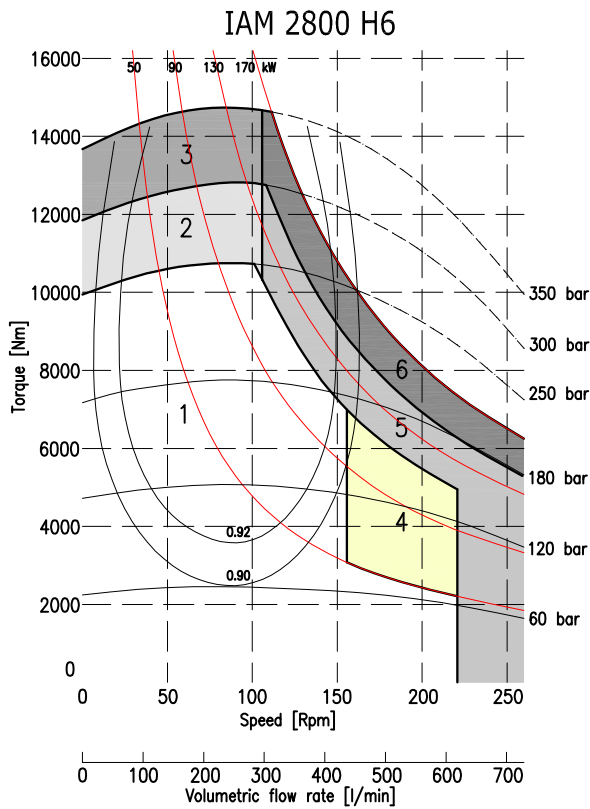
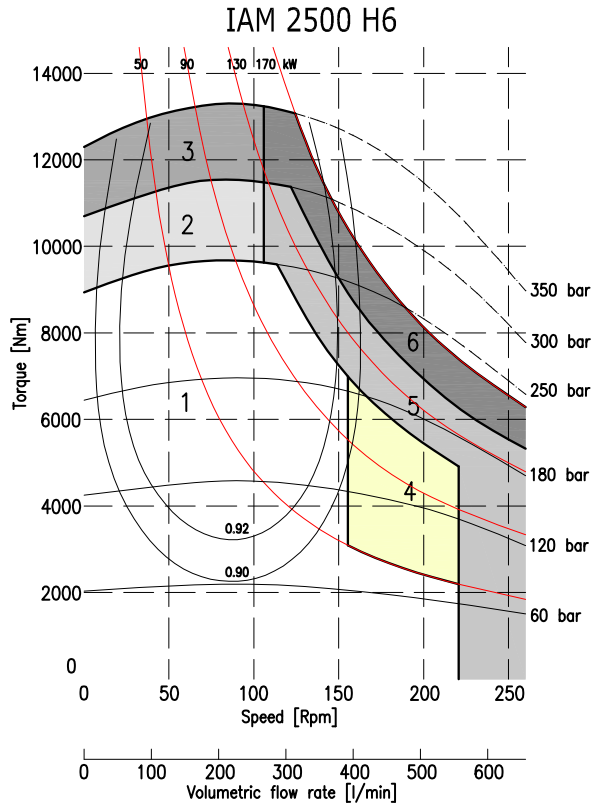
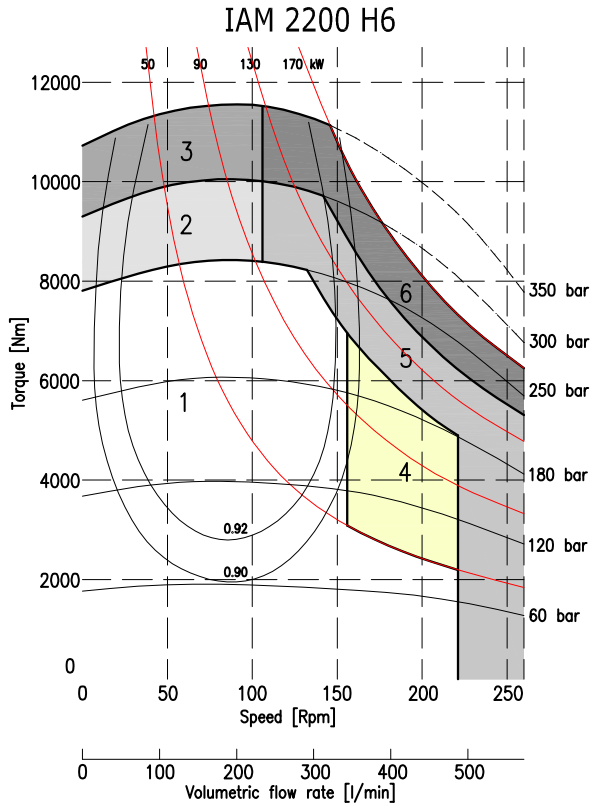
IAM 2200/B125-2500/B150-3000/B200 H6



ORDERING INSTRUCTIONS

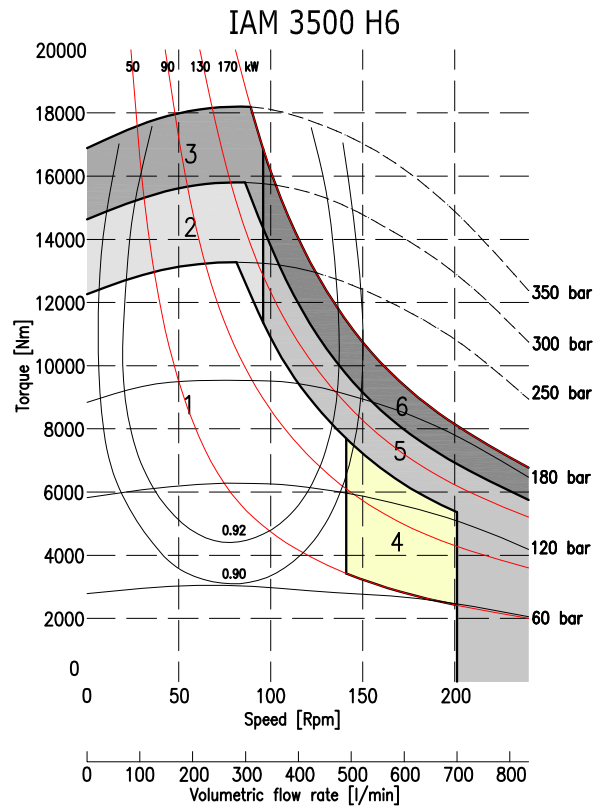
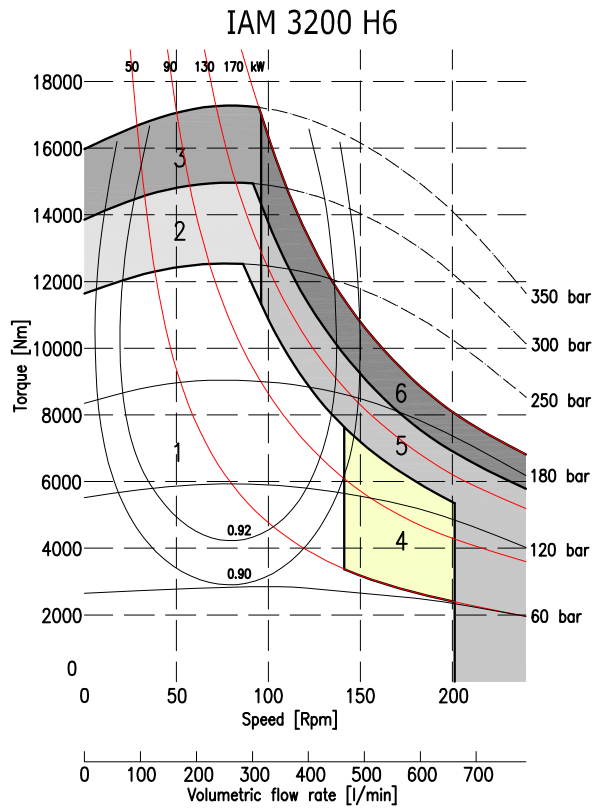


EXAMPLE: IAM.2500.H6.A1.D90
IAM.2800.H6.A0.D90.TA.SB9
IAM.2500/C.H6.A2.D90.J



1	Continuous operation
2	Intermittent operation for period 3-5 minutes every 10-15 minutes
3	Intermittent operation for very short period (3-5 seconds every 10-15 minutes)

4	Continuous operation with flushing
5	Intermittent operation for period 3-5 minutes every 10-15 minutes with flushing
6	Intermittent operation for very short period (3-5 seconds every 10-15 minutes) with flushing



1	Continuous operation
2	Intermittent operation for period 3-5 minutes every 10-15 minutes
3	Intermittent operation for very short period (3-5 seconds every 10-15 minutes)

4	Continuous operation with flushing
5	Intermittent operation for period 3-5 minutes every 10-15 minutes with flushing
6	Intermittent operation for very short period (3-5 seconds every 10-15 minutes) with flushing